

WithSecure™ Elements Collaboration Protection

Layered protection to detect and stop advanced threats and phishing attacks.

WithSecure™ Elements for Collaboration Protection fortifies Microsoft's native security capabilities against increasingly sophisticated phishing attacks and malicious content across email, calendar, tasks and SharePoint. Advanced detection capabilities include inbox anomaly and email account compromise detection. The cloud-native solution is designed for Microsoft 365 and is a seamless extension of your Elements endpoint security solutions.

Cost-efficiently ensure business continuity with a multilayer approach.

Block malicious content including malware, ransomware and phishing attempts.

Continuous protection regardless of end-user's access device. No interruptions or email gateway outages.

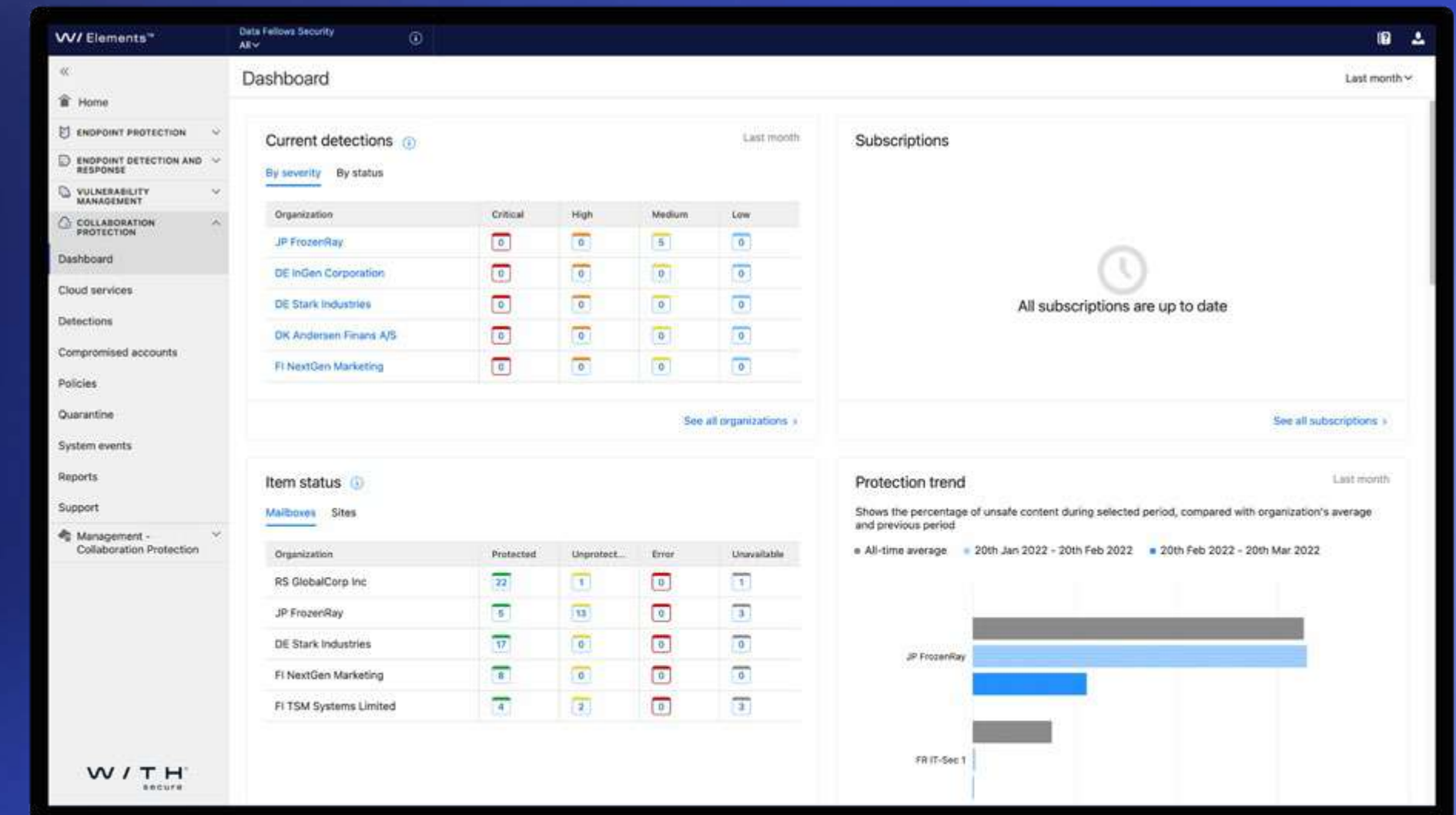
Detect even the most sophisticated malware by running and analyzing suspicious files discovered on Outlook and SharePoint in an isolated sandboxing environment.

Simplify workflows with unified security management across endpoints and the cloud.

Detect if your company accounts have been breached with comprehensive information about how, what, when and how severely.

Deploy without hassle with seamless cloud-to-cloud integration. No need for middleware or extensive configuration.

Trust your inbox. Detect behavioral anomalies such as malicious forwarding rules.



Try 30 days for free

WithSecure™ Elements for collaboration protection is available as a standalone solution or as an integral capability in the modular WithSecure™ Elements cyber security platform.

總代理

湛揚科技
www.t-tech.com.tw

台北：(02)2515-1585
高雄：(07)972-7388

技服電話：(02)2515-1599
技服信箱：support@t-tech.com.tw